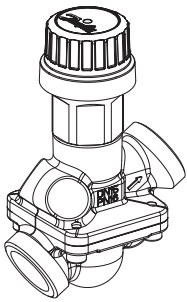
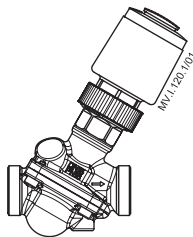


Operating Guide

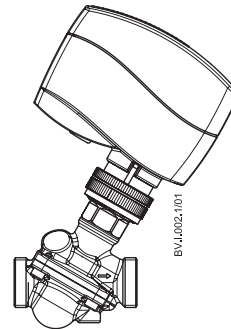
# AB-QM DN 10-32



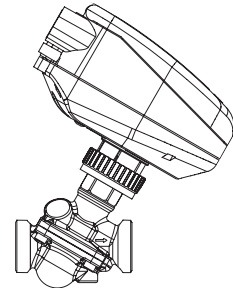
TWA-Z +  
AB-QM DN 10-32



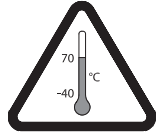
ABNM +  
AB-QM DN 10-32



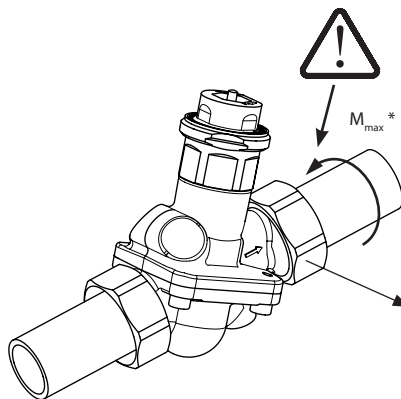
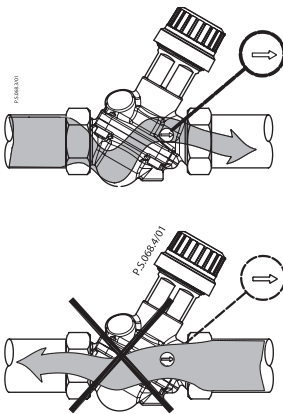
AMV/AME 110 NL, 120 NL +  
AB-QM DN 10-32



NovoCon™ +  
AB-QM DN 10-32



Installation / Montering / Einbau / Installation / Installatie / Installation / Asennus / Montaż / Uzstādīšana / Beépítés / MONTAJ /  
Монтаж / Instalace / 安装 / Vgradnja / Instalación / Montavimas

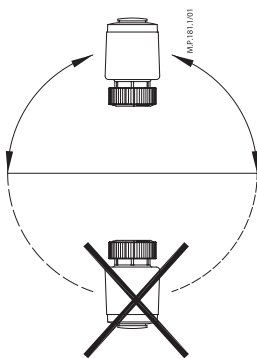


DN	To pipe		Weld.c.		Solder.c.	
	R	L (mm)	L (mm)	Code No.	L (mm)	Code No.
10	R 3/8	26		<b>003Z0231</b>	17	<b>065Z7016</b>
15	R 1/2	27.5	37	<b>003Z0232</b>	22	<b>065Z7017</b>
20	R 3/4	30.5	42	<b>003Z0233</b>		
25	R 1	35	42	<b>003Z0234</b>		
32	R 1 1/4	38.5	42	<b>003Z0235</b>		

<sup>1)</sup>  $M_{max}$  for DN 10 is 35 Nm

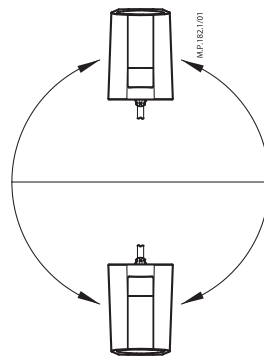
<sup>2)</sup> Not applicable with valves with Eurocone connection (003Z1281)

TWA-Z



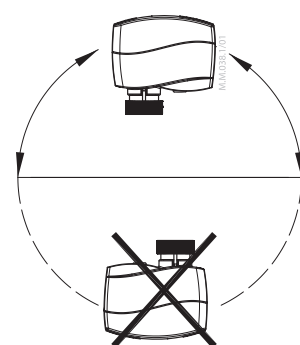
IP 41

ABNM



IP 54

AMV/AME 110NL, 120 NL



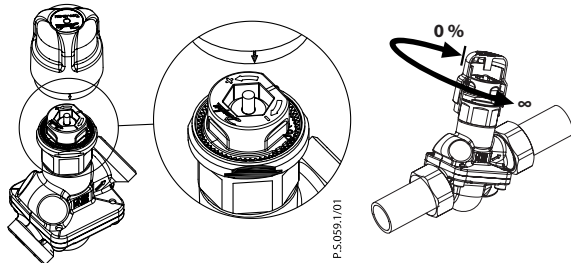
IP 42

## AB-QM DN 10-32

Shut off / Afspærring / Absperrung / Fermeture / Afsluiten / Avstängning / Sulkuventtiili / Funkcja odcięcia / Aizvēršana / Elzárás /  
 КАРПАМ / Отключение / Uzavření / 关闭 / Zapiranje pretoka / Corte / Uždarymas

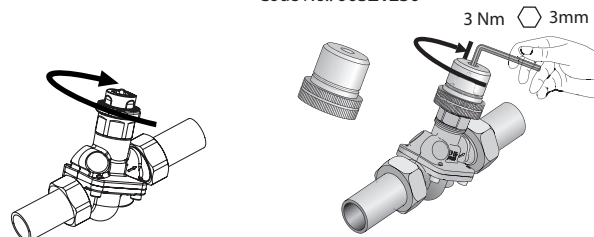
$\Delta p_{max} = 1 \text{ bar}$

Code No.: 003Z0240

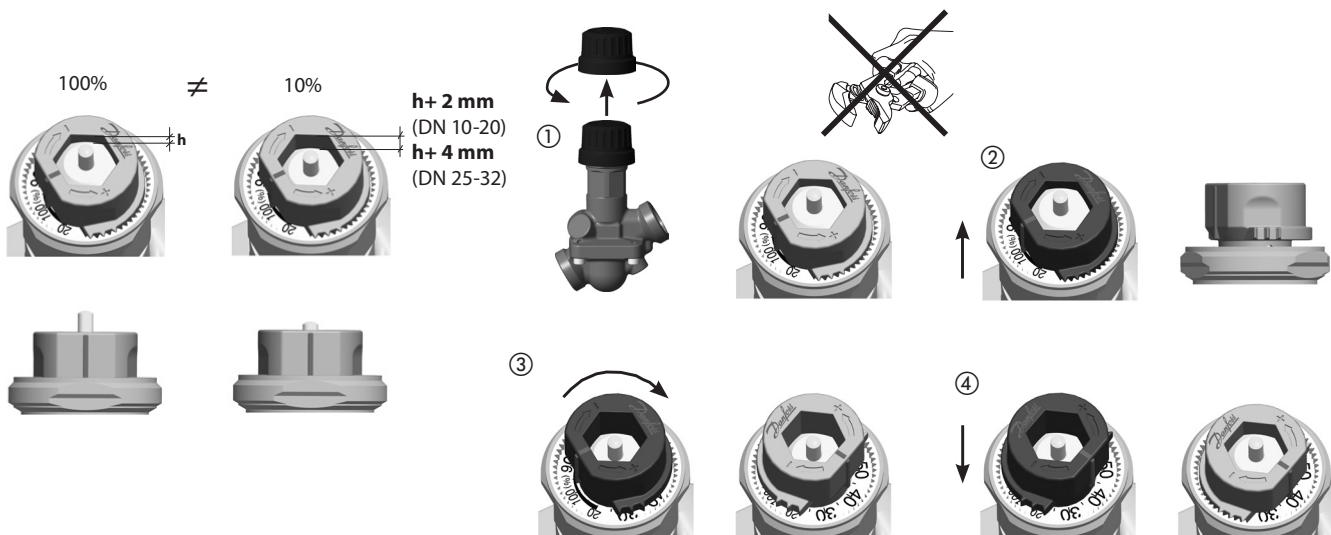


$\Delta p_{max} = 16 \text{ bar}$

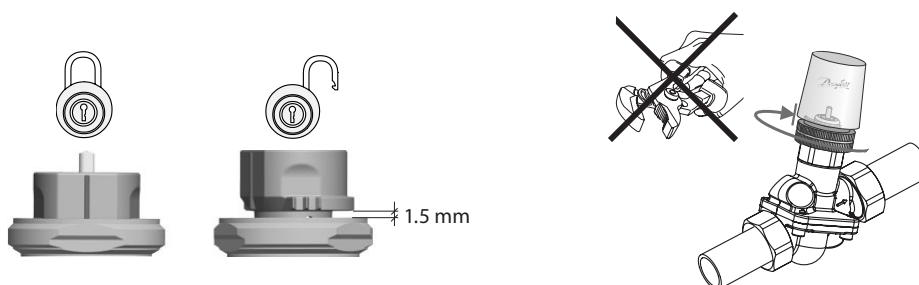
Code No.: 003Z1230



Setting / Indstilling / Einstellung / Réglage / Instelling / Inställning / Asettelu / Wykonywanie nastawy / Iestādījumi / Beállítás /  
 АЯРЛАМА / Настройка / Nastavení / 设定 / Nastavitev / Ajuste / Nustatymas

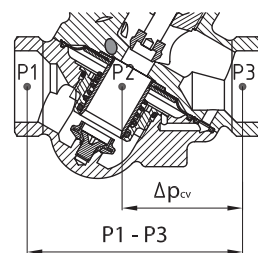
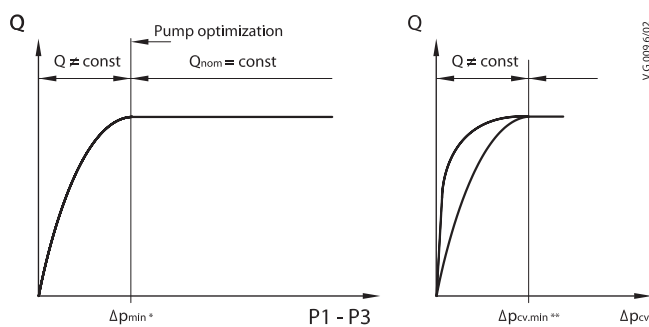
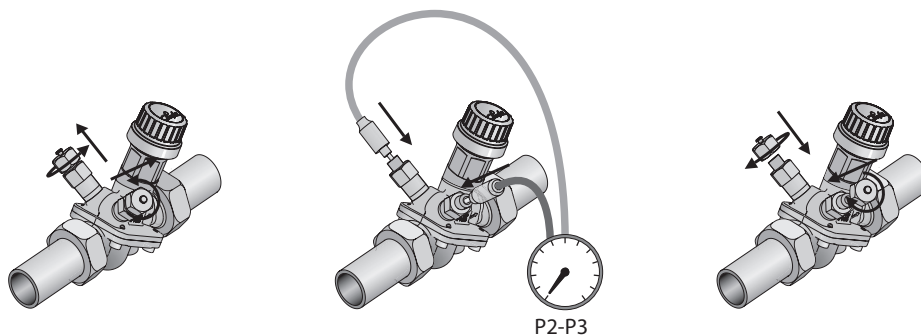


Locking / Låsning / Blockierung / Verrouillage / Vergrendelen / Låsning / Lukitseminen / Blokowanie nastawy / Noslēgšana / Korlátozás /  
 KILÍTLEME / Блокировка / Uzamykání / 锁定 / Blokiranje / Bloqueo / Blokavimas



**AB-QM DN 10-32**

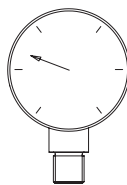
Measuring / Måling / Messung / Mesure / Meten / Mätning / Mittaaminen / Wykonywanie pomiarów / Mērišana / Mérés / ÖLÇÜM / Измерение / Měření / 測量 / Merjenje / Medida / Matavimas



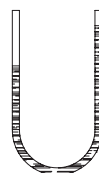
\*  $\Delta p_{min} = (P1-P3)_{min}$   
 \*\*  $\Delta p_{cv,min} = \Delta p_{cv,min}$



-10...120 °C



PN 16



$\Delta p_{max} = 600 \text{ kPa (6 bar)}$



AB-QM DN 10-32

DN 10	Low Flow			Normal Flow		
	L/h	L/s	GPM	L/h	L/s	GPM
20%	30	0.008	0.13	55	0.015	0.24
25%	38	0.010	0.17	69	0.019	0.30
30%	45	0.013	0.20	83	0.023	0.36
35%	53	0.015	0.23	96	0.027	0.42
40%	60	0.017	0.26	110	0.031	0.48
45%	68	0.019	0.30	124	0.034	0.54
50%	75	0.021	0.33	138	0.038	0.61
55%	83	0.023	0.36	151	0.042	0.67
60%	90	0.025	0.40	165	0.046	0.73
65%	98	0.027	0.43	179	0.050	0.79
70%	105	0.029	0.46	193	0.053	0.85
75%	113	0.031	0.50	206	0.057	0.91
80%	120	0.033	0.53	220	0.061	0.97
85%	128	0.035	0.56	234	0.065	1.03
90%	135	0.038	0.59	248	0.069	1.09
95%	143	0.040	0.63	261	0.073	1.15
100%	150	0.042	0.66	275	0.076	1.21
105%	158	0.044	0.69	289	0.080	1.27
110%	165	0.046	0.73	303	0.084	1.33
115%	173	0.048	0.76	316	0.088	1.39
120%	180	0.050	0.79	330	0.092	1.45

DN 15	Low Flow			Normal Flow			High Flow		
	L/h	L/s	GPM	L/h	L/s	GPM	L/h	L/s	GPM
20%	55	0,015	0,24	90	0,025	0,40	227	0,063	1,00
25%	69	0,019	0,30	113	0,031	0,50	284	0,079	1,25
30%	83	0,023	0,36	135	0,038	0,59	341	0,095	1,50
35%	96	0,027	0,42	158	0,044	0,69	397	0,110	1,75
40%	110	0,031	0,48	180	0,050	0,79	454	0,126	2,00
45%	124	0,034	0,54	203	0,056	0,89	511	0,142	2,25
50%	138	0,038	0,61	225	0,063	0,99	568	0,158	2,50
55%	151	0,042	0,67	248	0,069	1,09	624	0,173	2,75
60%	165	0,046	0,73	270	0,075	1,19	681	0,189	3,00
65%	179	0,050	0,79	293	0,081	1,29	738	0,205	3,25
70%	193	0,053	0,85	315	0,088	1,39	795	0,221	3,50
75%	206	0,057	0,91	338	0,094	1,49	851	0,236	3,75
80%	220	0,061	0,97	360	0,100	1,58	908	0,252	4,00
85%	234	0,065	1,03	383	0,106	1,68	965	0,268	4,24
90%	248	0,069	1,09	405	0,113	1,78	1022	0,284	4,49
95%	261	0,073	1,15	428	0,119	1,88	1078	0,300	4,74
100%	275	0,076	1,21	450	0,125	1,98	1135	0,315	4,99
105%	289	0,080	1,27	473	0,131	2,08	1192	0,331	5,24
110%	303	0,084	1,33	495	0,138	2,18	1249	0,347	5,49
115%	316	0,088	1,39	518	0,144	2,28	-	-	-
120%	330	0,092	1,45	540	0,150	2,38	-	-	-

DN 20	Normal Flow			High Flow		
	L/h	L/s	GPM	L/h	L/s	GPM
20%	180	0.050	0.79	340	0.094	1.50
25%	225	0.063	0.99	425	0.118	1.87
30%	270	0.075	1.19	510	0.142	2.24
35%	315	0.088	1.39	595	0.165	2.62
40%	360	0.100	1.58	680	0.189	2.99
45%	405	0.113	1.78	765	0.213	3.37
50%	450	0.125	1.98	850	0.236	3.74
55%	495	0.138	2.18	935	0.260	4.11
60%	540	0.150	2.38	1020	0.283	4.49
65%	585	0.163	2.57	1105	0.307	4.86
70%	630	0.175	2.77	1190	0.331	5.24
75%	675	0.188	2.97	1275	0.354	5.61
80%	720	0.200	3.17	1360	0.378	5.98
85%	765	0.213	3.37	1445	0.401	6.36
90%	810	0.225	3.56	1530	0.425	6.73
95%	855	0.238	3.76	1615	0.449	7.11
100%	900	0.250	3.96	1700	0.472	7.48
105%	945	0.263	4.16	1785	0.496	7.85
110%	990	0.275	4.36	1870	0.519	8.23
115%	1035	0.288	4.55	-	-	-
120%	1080	0.300	4.75	-	-	-

DN 25	Normal Flow			High Flow		
	L/h	L/s	GPM	L/h	L/s	GPM
20%	340	0.094	1.50	540	0.150	2.38
25%	425	0.118	1.87	675	0.188	2.97
30%	510	0.142	2.24	810	0.225	3.56
35%	595	0.165	2.62	945	0.263	4.16
40%	680	0.189	2.99	1080	0.300	4.75
45%	765	0.213	3.37	1215	0.338	5.35
50%	850	0.236	3.74	1350	0.375	5.94
55%	935	0.260	4.11	1485	0.413	6.53
60%	1020	0.283	4.49	1620	0.450	7.13
65%	1105	0.307	4.86	1755	0.488	7.72
70%	1190	0.331	5.24	1890	0.525	8.32
75%	1275	0.354	5.61	2025	0.563	8.91
80%	1360	0.378	5.98	2160	0.600	9.50
85%	1445	0.401	6.36	2295	0.638	10.10
90%	1530	0.425	6.73	2430	0.675	10.69
95%	1615	0.449	7.11	2565	0.713	11.29
100%	1700	0.472	7.48	2700	0.750	11.88
105%	1785	0.496	7.85	2835	0.788	12.47
110%	1870	0.519	8.23	2970	0.825	13.07

DN 32	Normal Flow			High Flow		
	L/h	L/s	GPM	L/h	L/s	GPM
20%	640	0.178	2.82	800	0.222	3.52
25%	800	0.222	3.52	1000	0.278	4.40
30%	960	0.267	4.22	1200	0.333	5.28
35%	1120	0.311	4.93	1400	0.389	6.16
40%	1280	0.356	5.63	1600	0.444	7.04
45%	1440	0.400	6.34	1800	0.500	7.92
50%	1600	0.444	7.04	2000	0.556	8.80
55%	1760	0.489	7.74	2200	0.611	9.68
60%	1920	0.533	8.45	2400	0.667	10.56
65%	2080	0.578	9.15	2600	0.722	11.44
70%	2240	0.622	9.86	2800	0.778	12.32
75%	2400	0.667	10.56	3000	0.833	13.20
80%	2560	0.711	11.26	3200	0.889	14.08
85%	2720	0.756	11.97	3400	0.944	14.96
90%	2880	0.800	12.67	3600	1.000	15.84
95%	3040	0.844	13.38	3800	1.056	16.72
100%	3200	0.889	14.08	4000	1.111	17.60
105%	3360	0.933	14.78	4200	1.167	18.48
110%	3520	0.978	15.49	4400	1.222	19.36

Danfoss can accept no responsibility for possible errors in catalogues, brochures and other printed material. Danfoss reserves the right to alter its products without notice. This also applies to products already on order provided that such alterations can be made without subsequent changes being necessary in specifications already agreed. All trademarks in this material are property of the respective companies. Danfoss and the Danfoss logotype are trademarks of Danfoss A/S. All rights reserved.